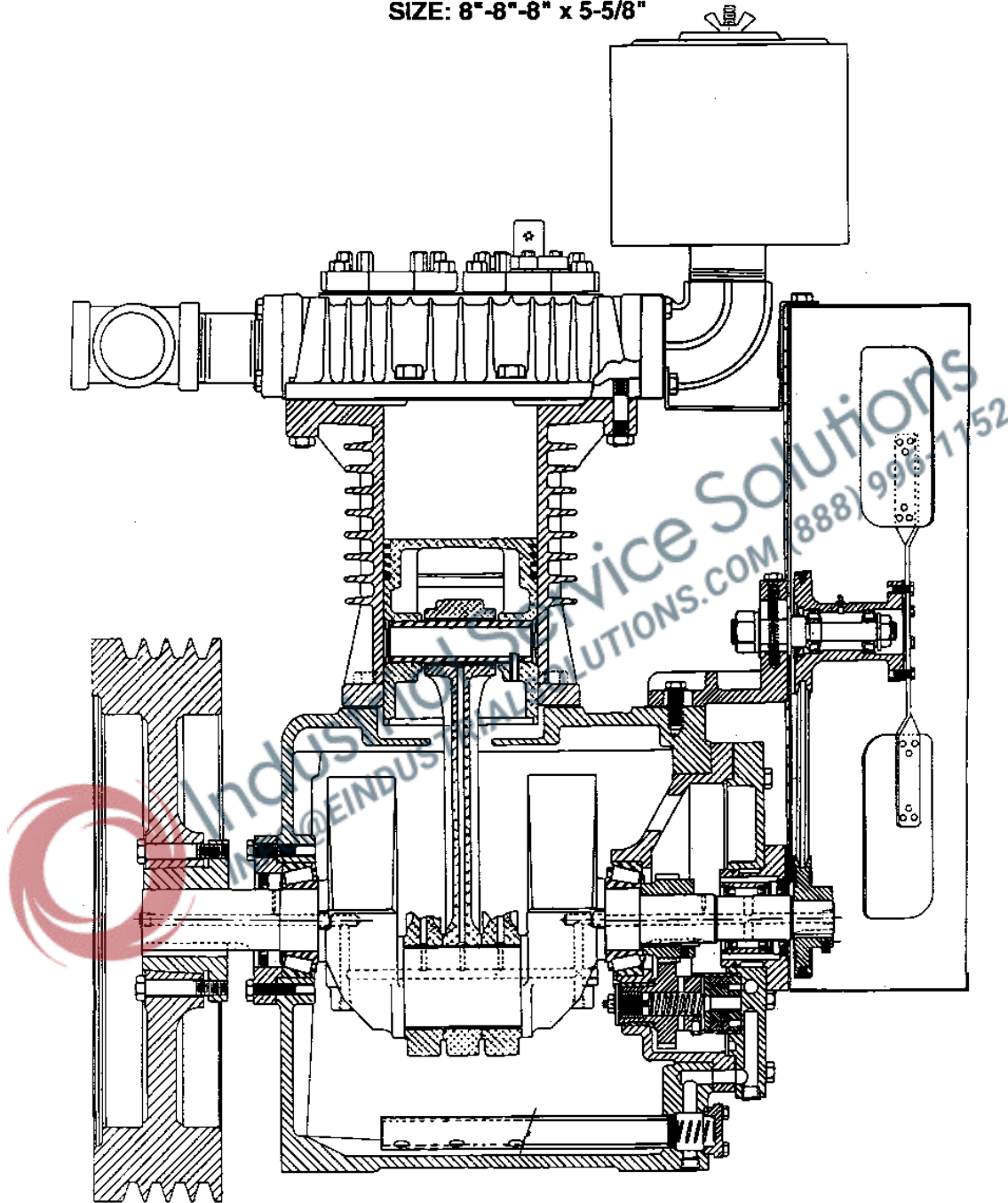


PARTS LIST
CURTIS AIR COMPRESSOR
MODEL C200S SINGLE STAGE

SIZE: 8"-8"-8" x 5-5/8"



CURTIS-TOLEDO, INC.

1905 Kienlen Avenue, St. Louis, Missouri 63133

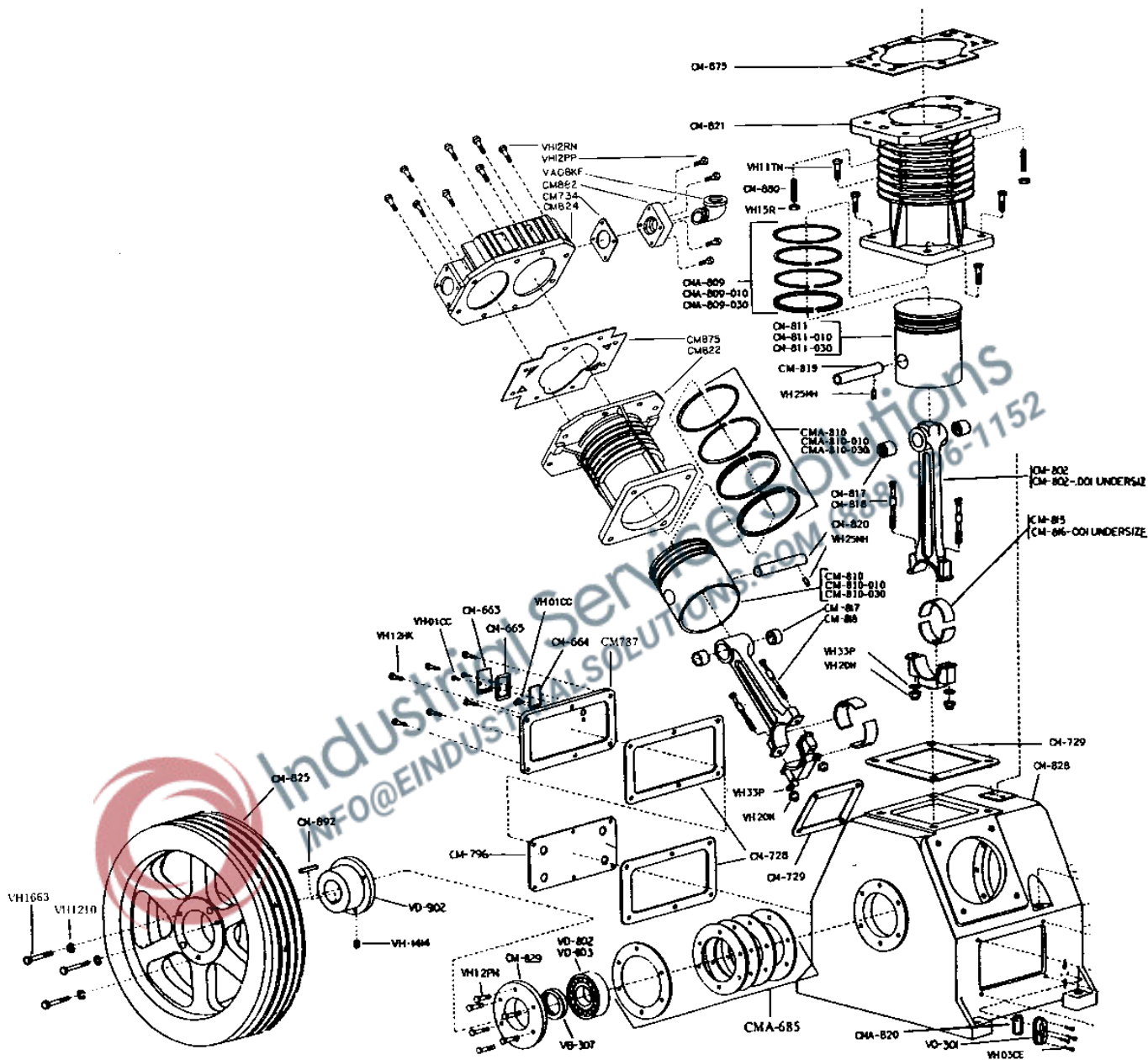
ph: (314) 383-1300 fax: (314) 381-1439

email: info@curtistoledo.com website: www.curtistoledo.com

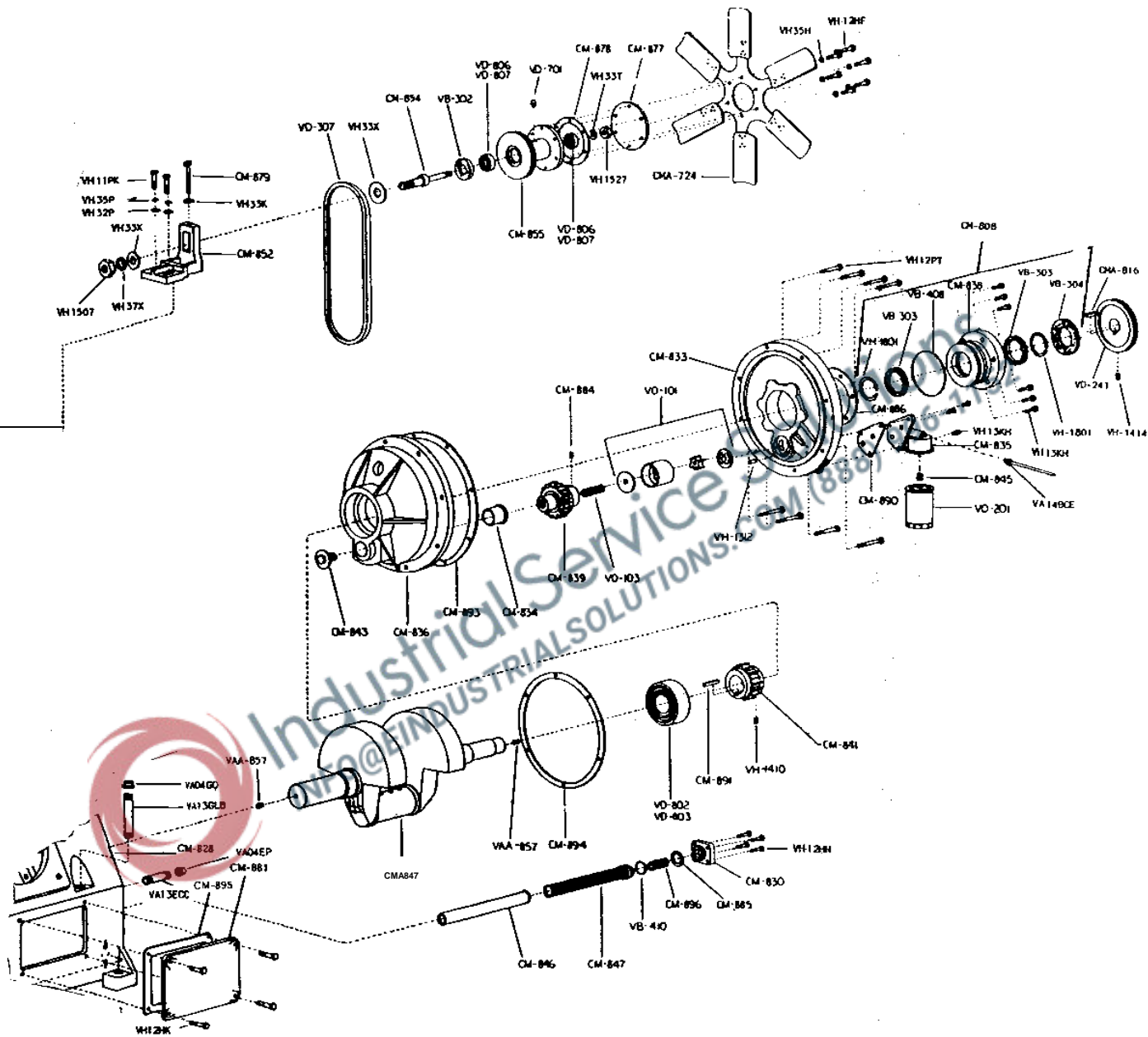
Sales representatives in principal cities

info@industrialsolutions.com

(888) 996-1152

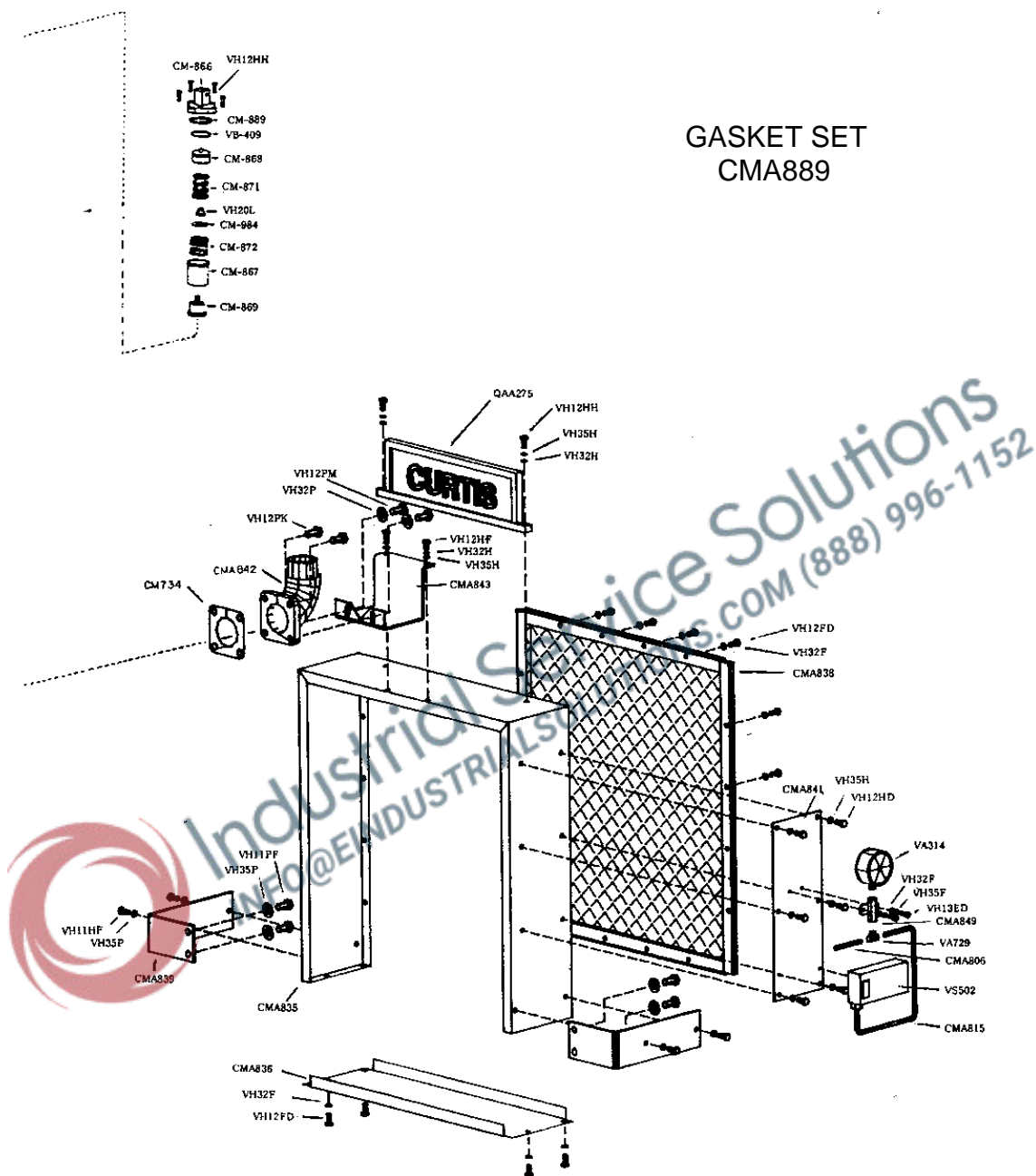


GASKET SET
CMA889



Give name and part number as shown and **SERIAL NUMBER** of compressor when ordering parts.
 Serial number appears on nameplate attached to compressor

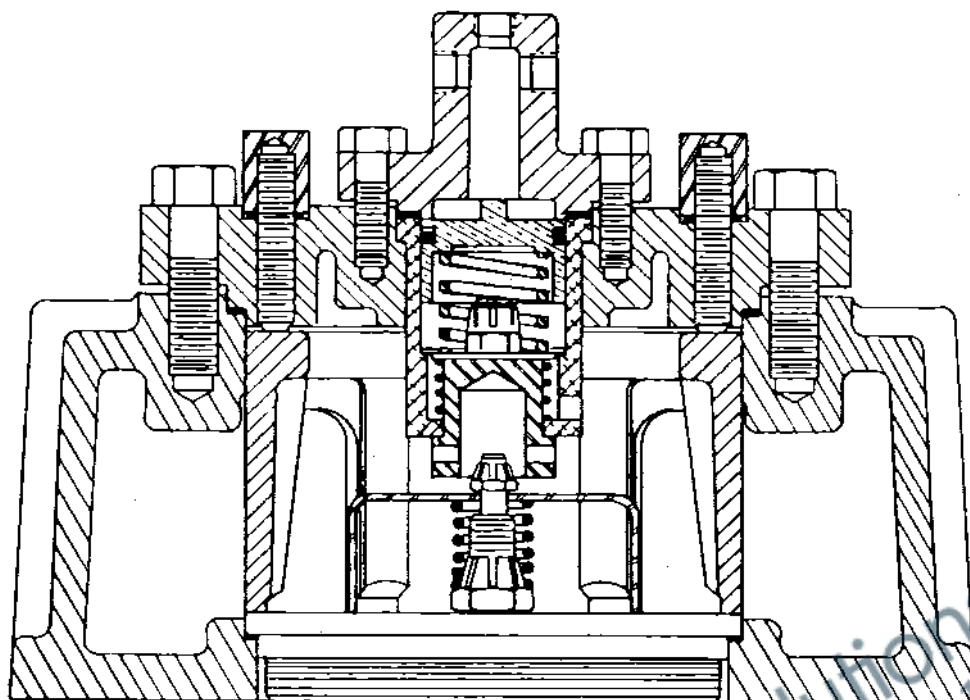
Refer to **MASTER PARTS PRICE LIST** for prices.



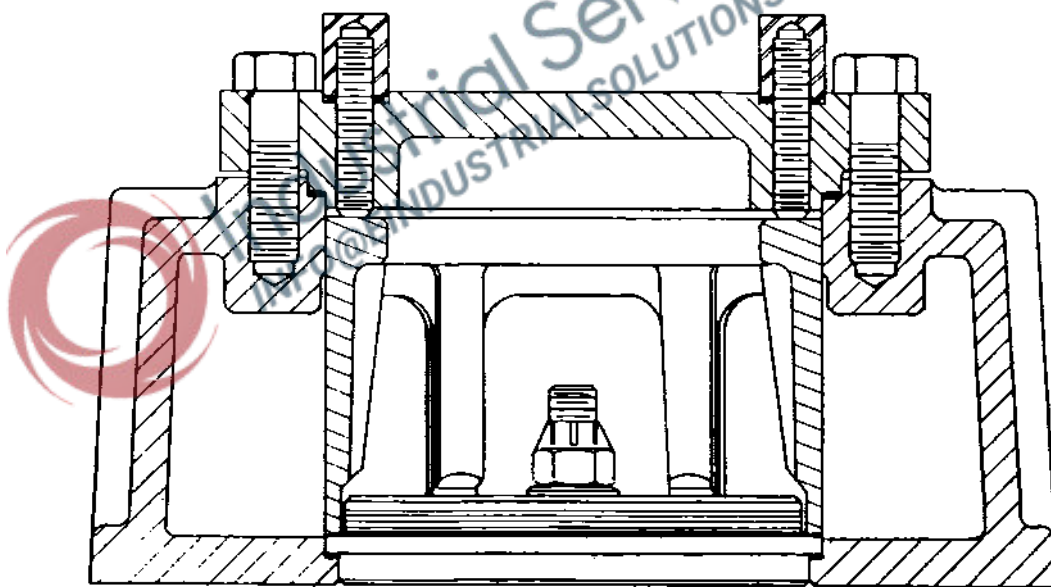
GASKET SET CMA889

Give name and part number as shown and **SERIAL NUMBER** of compressor when ordering parts.
Serial number appears on nameplate attached to compressor

Refer to **MASTER PARTS PRICE LIST** for prices.



ASSEMBLY - SUCTION



ASSEMBLY-DISCHARGE

CYLINDER HEAD ASSEMBLY
CM-805

BODY PARTS		
PART NO.	QTY	DESCRIPTION
VH01CC	4	Rd. Hd. Machine Screw, 10-32 x 3/8
CM663	1	Breather Cover
CM664	1	Breather Valve
CM665	1	Breather Cover Gasket
CM728	2	Side Door Gasket
CM729	3	Cylinder Gasket
CM787	1	Side Door w/Breather Valve
CM796	1	Side Door Baffle
CM822	3	Cylinder L.P.
CM825	1	Flywheel
CM828	1	Crankcase
CM829	1	End Plate
CM830	1	Oil Strainer Cover
CM833	1	Bearing Plate Cover
CM834	1	Flange Bearing
CM835	1	Oil Filter Carrier
CM836	1	Bearing Plate
CM839	1	Lube Pump Carrier Gear
CM843	1	Closure Screw
CM845	1	Oil Filter Nipple
CM846	1	Oil Strainer Housing
CM847	1	Oil Strainer
CM875	3	Cylinder Head Gasket
CM881	1	Side Door
CM884	1	Lube Pump Carrier Gear Key
CM885	1	Oil Strainer Cover Gasket
CM886	1	Master Oil Seal Gasket
CM890	1	Oil Filter Carrier Gasket
CM892	1	Key, 5/8 x 5/8 x 3-3/4
CM893	1	Bearing Plate Cover Gasket
CM894	1	Bearing Plate Gasket
CM895	1	Side Door Gasket
CM896	1	Oil Strainer Spring
CMA685	1	Shim Set
CMA806	1	1/4" Tubing (Gauge to Filter)
CMA815	1	1/4" Tubing (Gauge to Switch)
CMA816	1	Key, 1/4 x 5/16 x 1 1/4
CMA889	1	Gasket Set
CMA818	1	"O" Ring Set
CMA820	1	Gasket, Oil Sight Glass
VH12HH	4	Hex Head, Cap Screw, 5/16-18 x 1" (H.T.)
VH15R	2	Hex Nut, 5/8-11
VA729	1	Brass Tee, 1/4MPT x 1/4 FPT x 1/4" Tube
VH11TN	12	Hex Head, Cap Screw, 3/4-10 x 1-3/4
VH13EGC	1	Pipe Nipple, Extra Heavy, 3/4" x 4" Lg.
VA314	1	Oil Pressure Gauge
VH14BCE	1	Brass Connector, 1/4 MPT x 1/4" Tube
VA1145	3	Air Filter Silencer, 2-1/2" Conn.
VA1144	3	Air Filter Element
VA13GLB	1	Pipe Nipple, 1-1/4" x 6" Lg.
VA04GQ	1	Pipe Cap, 1-1/4"
VA04EP	1	Pipe Cap, 3/4"
VB307	1	Oil Seal
VB410	1	"O" Ring, 1-1/8 x 1-1/4" x 1/16
VD241	1	Sheave, Complete w/Hardware
VD902	1	Bushing, Complete w/Hardware

BODY PARTS		
PART NO.	QTY	DESCRIPTION
VH1210	3	Lockwasher, 9/16 split
VH1312	1	Spring Pin, 1/4" dia. x 11/16 Lg.
VH1414	1	Set Screw, Cup Point, 3/8-24 x 1/2"
VH13KH	3	Hex Head, Cap Screw, 3/8-16 x 1 (H.T.)
VH12PM	6	Hex Head, Cap Screw, 1/2-13 x 1-1/2 (H.T.)
VH1663	3	Hex Head, Cap Screw, 9/16-12 x 4"
VH12PT	8	Hex Head, Cap Screw, 1/2-13 x 3" (H.T.)
VH03CE	4	Rd. Head, Machine Screw, 10-32 x 5/8"
VH01CC	2	Rd. Head, Machine Screw, 10-32 x 3/8"
VO-101	1	Oil Pump (complete Assembly)
VO-103	1	Oil Pump Retaining Spring
VO-201	1	Oil Filter
VO-301	1	Oil Sight Glass
VH12HK	10	Hex Head, Cap Screw, 5/16-18 x 1-1/4 (H.T.)
VS502	1	Oil Pressure Switch
CMA849	1	Oil Gauge Connection

CONNECTING RODS AND BEARINGS		
PART NO.	QTY	DESCRIPTION
CM802	3	Connecting Rod Complete w/bushing and Bearing
CM802-001	3	Connecting Rod, .001 Undersized, complete w/Bushing and Bearings
CM815	6	Bearing
CM816-001	6	Bearing, .001 Undersized Shaft
CM817	6	Pin Bushing
CM818	6	Connecting Rod Bolt
VH33P	6	Washer, Cut, 1/2" SAE
VH20N	6	Locknut, 1/2-20

PISTON - PIN		
PART NO.	QTY	DESCRIPTION
CM810	3	Piston, L.P., Standard
CM810-010	3	Piston, L.P., .010 Oversized
CM810-030	3	Piston, L.P., .030 Oversized
CM820	3	Piston Pin, L.P.
VH25MH	3	Piston Pin, Spring Pin

RINGS		
PART NO.	QTY	DESCRIPTION
CMA810	3	Piston Ring Set, L.P. Standard
CMA810-010	3	Piston Ring Set, L.P. .010 Oversized
CMA810-030	3	Piston Ring Set, L.P. .030 Oversized

CRANKSHAFT ASSEMBLY		
PART NO.	QTY	DESCRIPTION
CMA847	1	Crankshaft
CM848	1	Crankshaft w/2 R.B. Cones, VD803
CM841	1	Lube Pump Drive Gear
CM891	1	Lube Pump Drive Gear Key
VAA857	2	Crankshaft End Plug
VD803	2	Roller Bearing Cone, JH-211749
VD802	2	Roller Bearing Cup, JH-211710
VH1410	1	Set Screw, 5/16-18 x 1-3/8 Lg, Self-Locking

CYLINDER HEAD ASSEMBLY		
PART NO.	QTY.	DESCRIPTION
CM657	6	Cover Plate Gasket
CM734	6	4 Bolt Flange Gasket
CM805	3	Cylinder Head Assembly
CM824	3	Cylinder Head
CM858	3	Suction Valve Retainer
CM859	3	Discharge Valve Retainer
CM862	3	Suction Valve Cover Plate
CM863	3	Discharge Valve Cover Plate
CM866	3	Unloader Cap
CM867	3	Unloader Cylinder
CM868	3	Unloader Piston
CM869	3	Unloader Plunger
CM871	3	Piston Return Spring
CM872	3	Plunger Return Spring
CM874	6	Valve Gaskets Copper
CM880	2	Stud, 5/8-11 x 2 3/4
CM882	2	Discharge Flange, 2-1/2" MPT
CM887	3	Suction Valve w/unloader
CM887-1	3	Unloader Fork Locknut
CM887-2	3	Unloader Fork
CM887-3	3	Unloader Fork Spring
CM887-4	6	Centerbolt Locknut
CM887-5	3	Valve Seat
CM887-6	6	Washer (Thick)
CM887-7	6	Valve Plate
CM887-8	6	Dampening Plate
CM887-9	6	Spring Plate
CM887-10	6	Washer (Thin)
CM887-11	3	Guard Plate
CM887-12	3	Centerbolt
CM888	3	Discharge Valve
CM888-1	3	Locknut Washer
CM888-2	3	Guard Plate
CM888-3	6	Spring Plate
CM888-4	3	Valve Seat
CM889	3	Unloader Cylinder Gasket
CMA807	1	L.H. Unloader Tube
CMA808	1	R.H. Unloader Tube
VH12HH	12	Hex Head Cap Screw, 5/16-18 x 1" (H.T.)
VH11PH	8	Hex Head Cap Screw, 1/2-13x 1"
VH20L	3	Locknut, 7/16" -20
CM984	3	Washer 7/16" I.D. x 1.180 O.D. x 12Ga., Zinc Plate
RK2063	24	Stud Nuts, 3/8
VH1225	24	Washers, 25/64 I.D. x 9/16 O.D. x .051, Copper
VA14ACE	4	Connector, 1/8 MPT x 1/4" Tube
CMA842	1	Elbow, Suction
VA08KF	2	Elbow, Street 2-1/2"
VA01BA	2	Pipe Plug, 1/4 MPT Square Head
VB409	3	"O" Ring, 1 1/4 x 1 1/2 x 1/8 Viton
VH09KN	24	Set Screw, 3/8-16 x 1 3/4 Flat Point
VH12RN	24	Hex Head, Cap Screw, 5/8-11 x 1 3/4 (H.T.)
VH12PK	2	Hex Head, Cap Screw, 1/2-13 x 1 1/4
VH12PM	2	Hex Head, Cap Screw, 1/2-13 x 1 1/2(H.T.)
VH12PP	20	Hex Head, Cap Screw, 1/2-13 x 2

CYLINDER HEAD ASSEMBLY, continued		
PART NO.	QTY.	DESCRIPTION
VV1003	1	Unloader Pilot, 1/4" MPT

FAN GUARD ASSEMBLY		
PART NO.	QTY.	DESCRIPTION
CMA835	1	Frame, Fan Guard
CMA836	1	Bottom Panel
CMA837	1	Inner Screen (not shown)
CMA838	1	Outer Screen
CMA839	2	Mounting Bracket
CMA841	1	Gage and Switch Panel
CMA843	1	Top Base
QAA275	1	Curtis Nameplate
VH01CC	2	Machine Screw, (not shown) Oil Switch
VH38D	4	Lockwasher, (not shown) Oil Switch
VH11HF	4	Hex Head Cap Screw, 5/16-18 x 3/4
VH11PF	4	Hex Head Cap Screw, 1/2-13 x 3/4
VH12FD	20	Hex Head Cap Screw, 1/4-20 x 1/2
VH12HD	6	Hex Head Cap Screw, 5/16-18 x 1/2
VH12HF	2	Hex Head Cap Screw, 5/16-18 x 3/4 Gr.5
VH12HH	2	Hex Head Cap Screw, 5/16-18 x 1" Gr.5
VH13ED	2	Hex Head Cap Screw, 1/4-28 x 1/2
VH32F	22	Washer, Cut 1/4
VH32H	4	Washer, Cut 5/16
VH35H	14	Lockwasher, Spring Reg. 5/16
VH35F	2	Lockwasher, Spring Reg. 1/4
VH35P	4	Lockwasher, Spring Redg. 1/2

DISCHARGE MANIFOLD ASSEMBLY		
PART NO.	QTY.	DESCRIPTION
CM794	2	Tube
CMA831	1	Assembly, Discharge Manifold
CMA831A	4	Half Nipple
CM882	3	Discharge Flange
VA06KF	2	90° Elbow
VA11KF	1	Cross
VA13KVA	1	Nipple, 3" Lg.
VA13KHA	1	Nipple, 1/2 Lg.
VA13KLA	1	Nipple, 6" Lg.

FAN PULLEY ASSEMBLY		
PART NO.	QTY.	DESCRIPTION
CMA724	1	Fan
CM852	1	Fan Bracket
CM854	1	Fan Shaft
CM855	1	Fan Pulley
CM877	1	Fan Pulley Plate
CM878	1	Fan Pulley Plate Gasket
CM879	1	Adjusting Screw, 3/8-16 x 3 1/2
VH32P	2	Washer, 1/2" Cut
VH35H	6	Lockwasher, 5/16" Split
VH12HF	6	Hex Head Cap Screw, 5/16"-18 x 3/4" Lg
VH35P	2	Lockwasher, 1/2" Split
VH1527	1	Locknut, 3/4"-16
VB302	1	Oil Seal
VD307	1	"V" Belt, 4L-390

FAN PULLEY ASSEMBLY, continued		
PART NO.	QTY.	DESCRIPTION
VD701	1	Grease Fitting, 3/16" Straight
VD806	2	Roller Bearing Cup, LM11910
VD807	2	Roller Bearing Cone, LM11949
VH33T	1	Washer, 2" O.D. x 13/16 I.D. x .148 Thk.
VH33X	2	Washer, 2 1/2" O.D. x 1-1/16" I.D. x.165 Thk
VH33K	1	Washer, 13/16" O.D. x 13/32" I.D. x.165 Thk
VH37X	1	Lockwasher, Split, 1" Light Series
VH1507	1	Hex Nut, Light Series, 1"-14
VH11PK	2	Hex Head Cap Screw, 1/2"-13 x 1 1/4" Lg.

MASTER OIL SEAL ASSEMBLY		
PART NO.	QTY.	DESCRIPTION
CM808	1	Master Oil Seal Assembly
CM838	1	Master Oil Seal Housing
VB303	2	Oil Seal
VB304	1	Oil Seal
VB408	1	"O" Ring, 3 3/4 x 4 x 1/8
VH13KH	6	Hollow Head Hex Cap Screw, 3/8"-16 x 1" (H.T.)
VH1801	2	Retaining Ring





CURTIS-TOLEDO, INC.

1905 Kienlen Avenue, St. Louis, Missouri 63133

ph: (314) 383-1300 fax: (314) 381-1439

email: info@curtistoledo.com website: www.curtistoledo.com

Sales representatives in principal cities